

JOHN FOWLER & CIE (LEEDS) LTD

CHAUDIÈRE DE LOCOMOBILE N° 18662

1:10 DE LA DIMENSION NATURELLE.

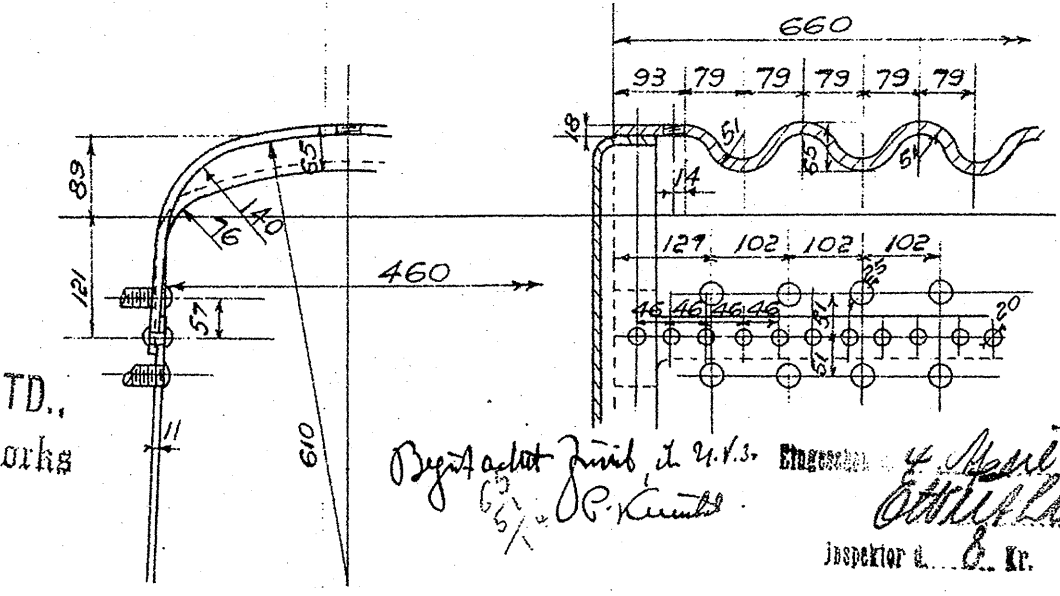
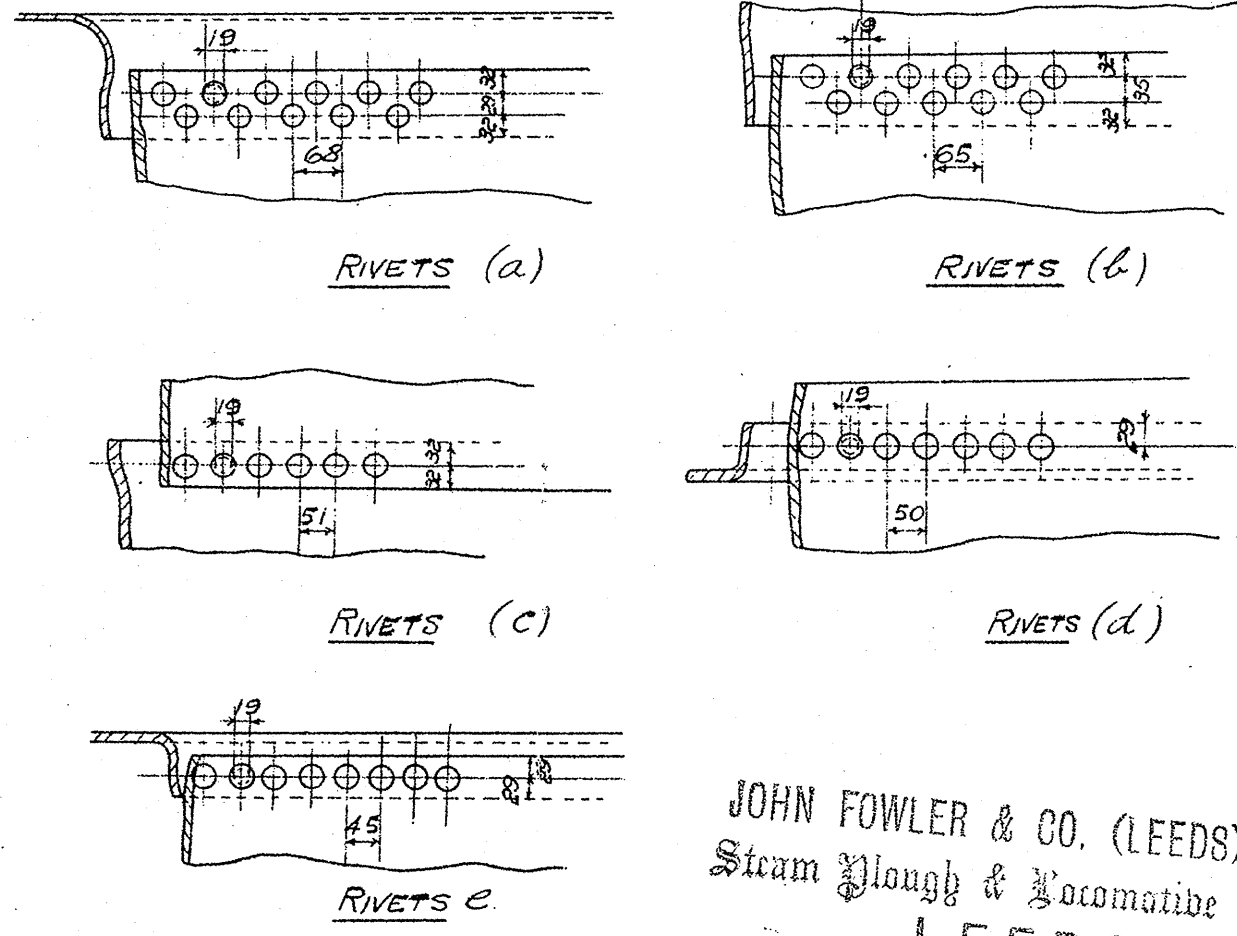
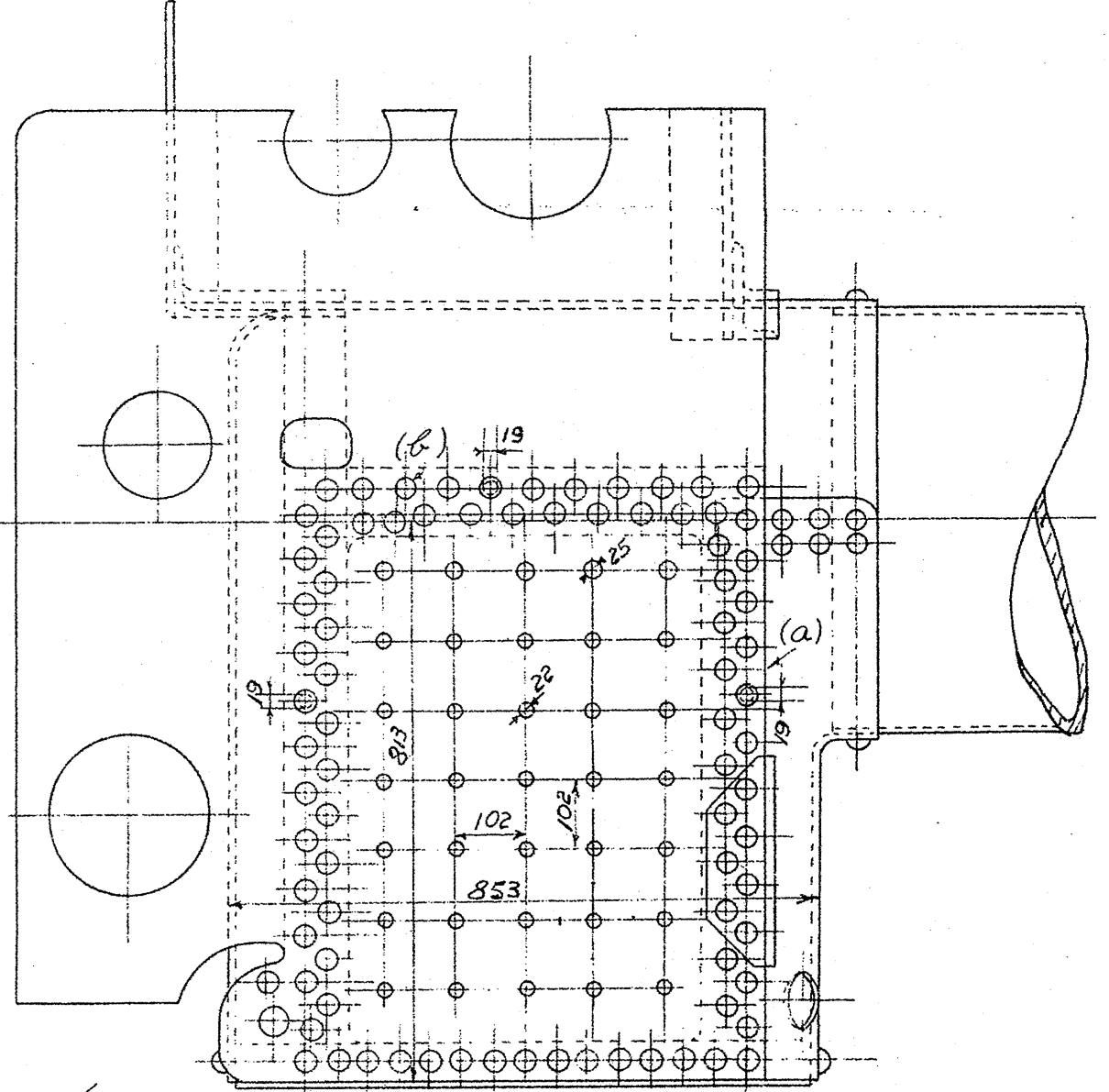
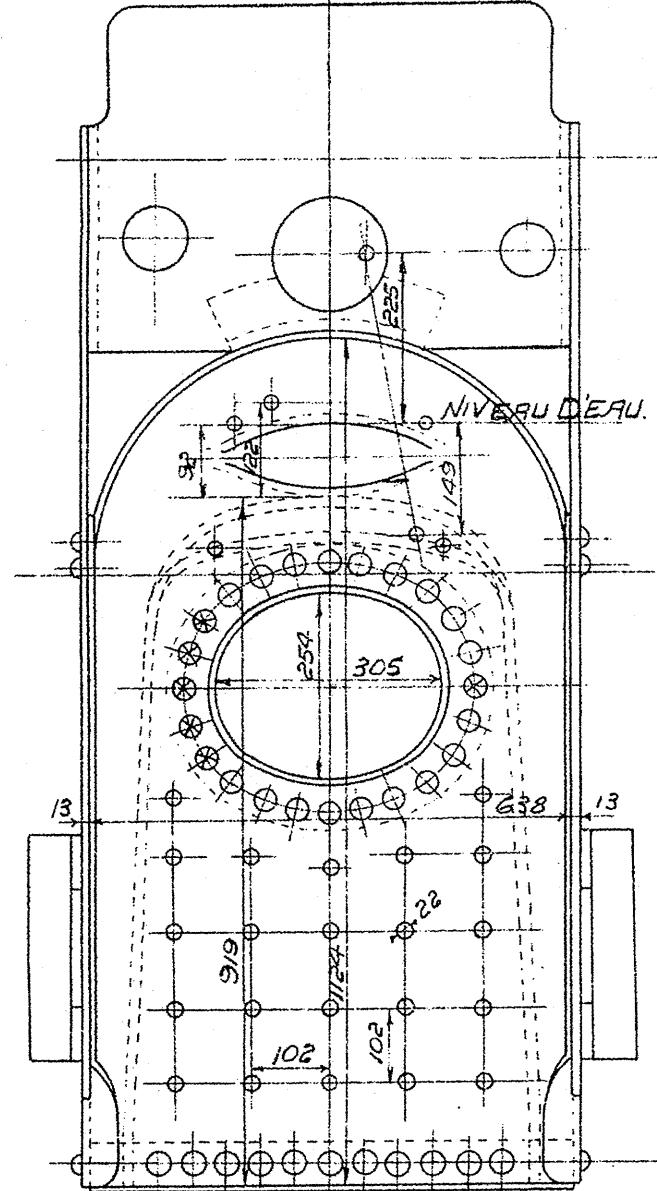
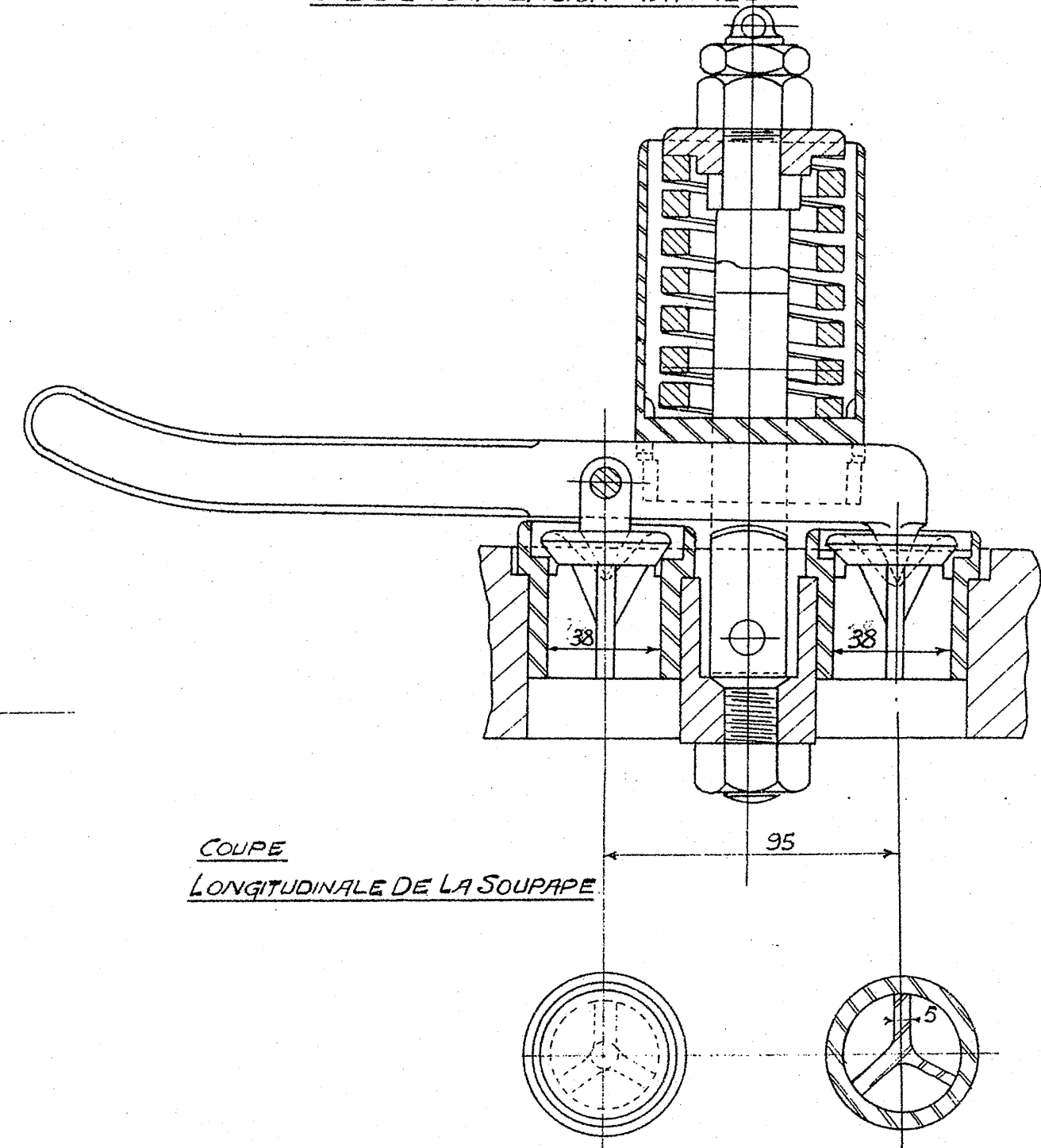
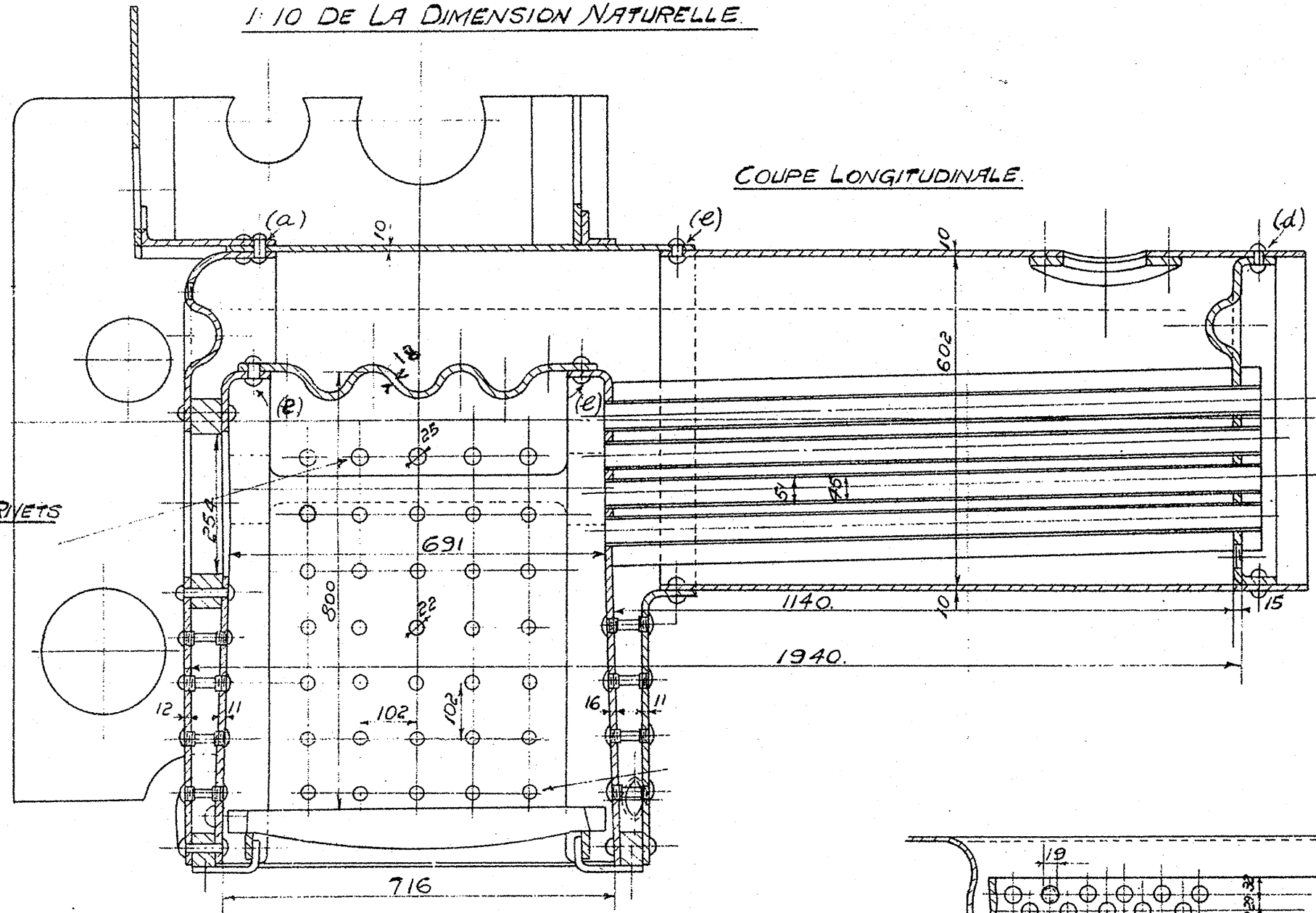
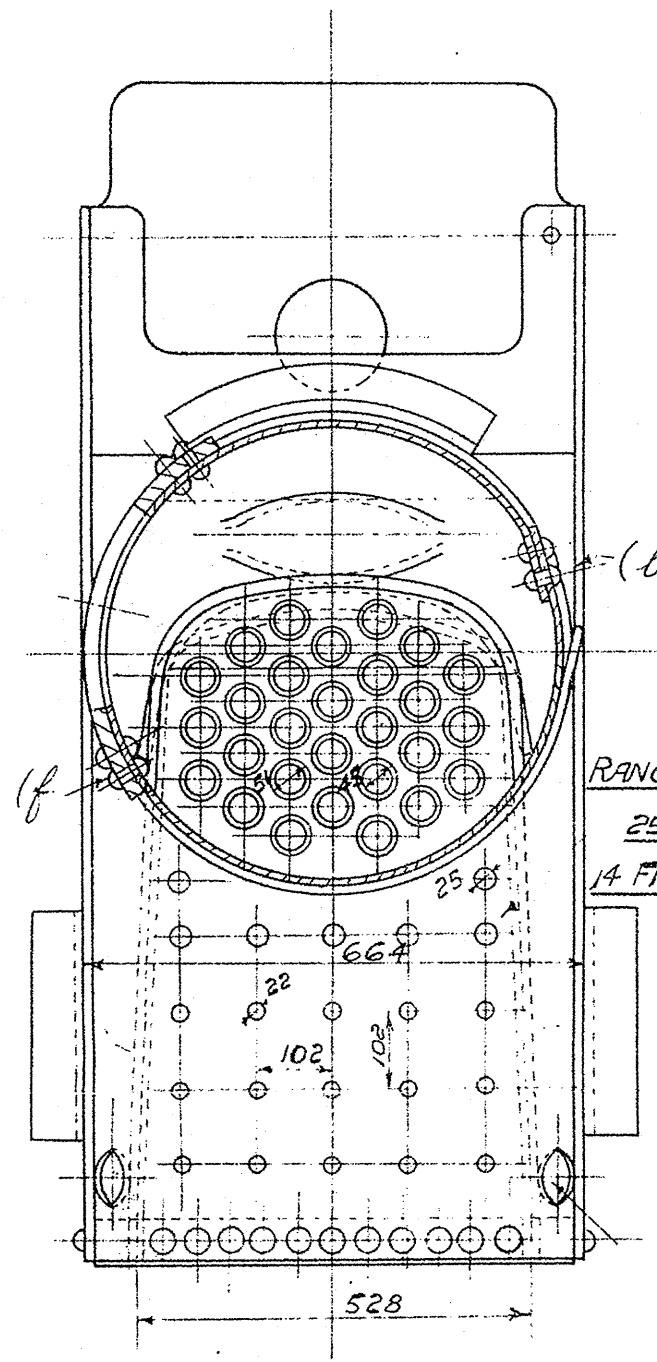
1/2 DE LA DIMENSION NATURELLE

COUPE EN TRAVERS

COUPE LONGITUDINALE

COUPE LONGITUDINALE DE LA SOUPE

COUPE EN TRAVERS DE LA SOUPE



JOHN FOWLER & CO. (LEEDS) LTD.,  
Steam Plough & Locomotive Works  
LEEDS.  
22 MAR 1930

Design and Print of 24.1.30  
J. P. K. Smith  
J. P. K. Smith  
J. P. K. Smith

1. SURFACE DE CHAUFFE DU FOYER.	M <sup>2</sup> .	2.041
2. SURFACE DE CHAUFFE DES TUBES.	M <sup>2</sup> .	5.02
3. SURFACE DE CHAUFFE TOTALE.	M <sup>2</sup> .	7.2
4. SURFACE DE LA GRILLE.	M <sup>2</sup> .	.38
5. PRESSION DE TIMBRE.		14.5 ATM
6. PRESSION D'ÉPREUVE.		24.5 ATM

RIVETS ENFONCÉS

10 DECMT. 10 9 8 7 6 5 4 3 2 1